



FACT SHEET



# Clever Labelling

Flexible and customisable labelling solutions for logistics and production

# Clever Labelling



## Want an easy way to print labels from Microsoft Dynamics 365 Business Central?

Clever Labelling enables you to produce your own labels throughout Dynamics 365 Business Central. Supporting multiple barcoding standards, it is compatible with both Lot and Serial tracked items. With Clever Labelling, you are able to create your own label designs or integrate to external labelling applications.

As it's compatible with our other Clever products, you can go further than just printing labels to generic printers in Dynamics 365 Business Central locations. Want to send them to a specific MES operator? You can. Link the labels to a WMS Device to be printed there? You can. This helps your business level up and cater for more bespoke needs.

### Features

- Automate when Dynamics 365 Business Central creates the label (i.e. at what Transaction Point such as Warehouse Receipt, Production Output etc)
- Create filters for more flexibility
- Supports multiple barcoding symbology's and encodings
- Pre-define Clever Labelling Printer selections to automate label printing by advanced criteria such as MES Operators, Device Users, Locations, etc
- Compatible with Cloud Software and Bartender
- Freedom to adapt your businesses' needs without heavy cost implications
- Ability to produce product labels throughout the supply chain straight from Dynamics 365 Business Central, from receipt through to despatch
- Compatible with Clever Containers, Clever MES and Clever WMS Devices to go beyond the standard Dynamics 365 Business Central functionality

### Requirements

Dynamics 365 Business Central or Premium

## Trigger printing using filters

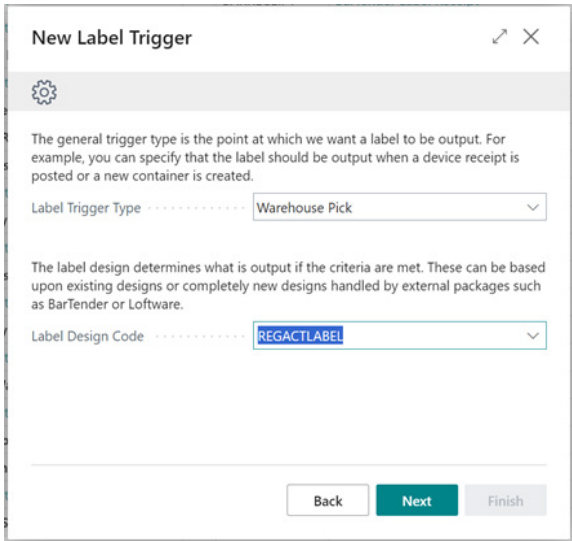
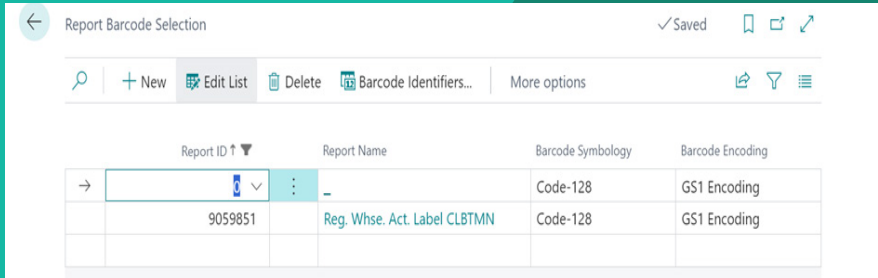
Dictate the label design used by specifying the trigger points (i.e. Transaction points within Dynamics 365 Business Central) in addition to defining additional criteria (such as vendors, item category codes etc). The ability to customise the criteria enables you to set up various label designs to be created throughout your business processes at any given time.

Name	Label Design Code	Label Design Description	Active	Stop Proc... After Trigger
Not set			<input type="checkbox"/>	<input type="checkbox"/>
Purchase Order Pre-Print			<input type="checkbox"/>	<input type="checkbox"/>
None set	PURCHPREPRI...	Purchase Order Pre-print	<input checked="" type="checkbox"/>	<input checked="" type="checkbox"/>
Posted Warehouse Receipt			<input type="checkbox"/>	<input type="checkbox"/>
Item Category Code FURNITURE	NICERECEIPT	NiceLabel Label Receipt	<input type="checkbox"/>	<input type="checkbox"/>
None set	BARRECEIPT	BarTender Label Receipt	<input checked="" type="checkbox"/>	<input checked="" type="checkbox"/>
None set	WHSENTRY	Warehouse Entry	<input type="checkbox"/>	<input checked="" type="checkbox"/>
Purchase Receipt			<input type="checkbox"/>	<input type="checkbox"/>
None set	ITEMLEDGENTRY	Item Ledger Entry	<input checked="" type="checkbox"/>	<input checked="" type="checkbox"/>
Return Receipt			<input type="checkbox"/>	<input type="checkbox"/>

# Easily select barcode format

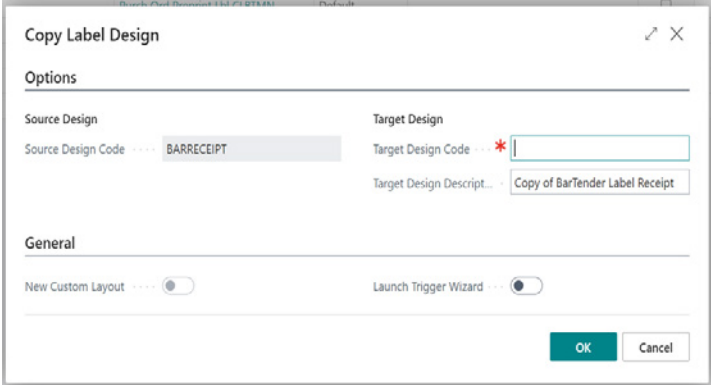
Here you can choose from multiple barcode symbologies and encodings, allowing you the means of creating a barcode specification set.

Want to use one barcode format for the majority of your processes but need some customised per label report? No problem! You decide what barcode specification to use when and where you need them.



# Simple to set up

Our Setup wizard guides you through the setup process, assisting users through the necessary setup step by step getting you started with Clever Labelling in no time.

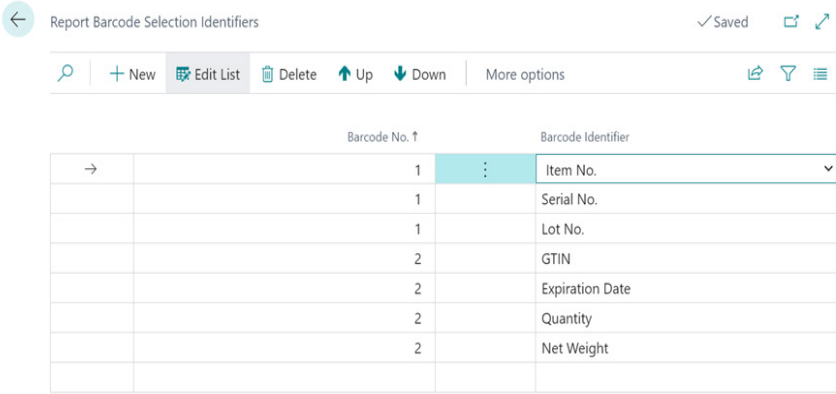


# Next level efficiency

Easily create a new label design using an existing one as a template. So rather than spending time creating designs from scratch, start off with an existing one as a template and tweak as necessary to speed up the process.

# Easily select the required data to create barcodes

Use Clever Labelling to set specific barcode requirements per type of label. For example, you can use GS1-128 on all your main labels but then code 3 of 9 for others. It's that flexible!





FACT SHEET



# Clever Labelling

Flexible and customisable labelling solutions for logistics and production